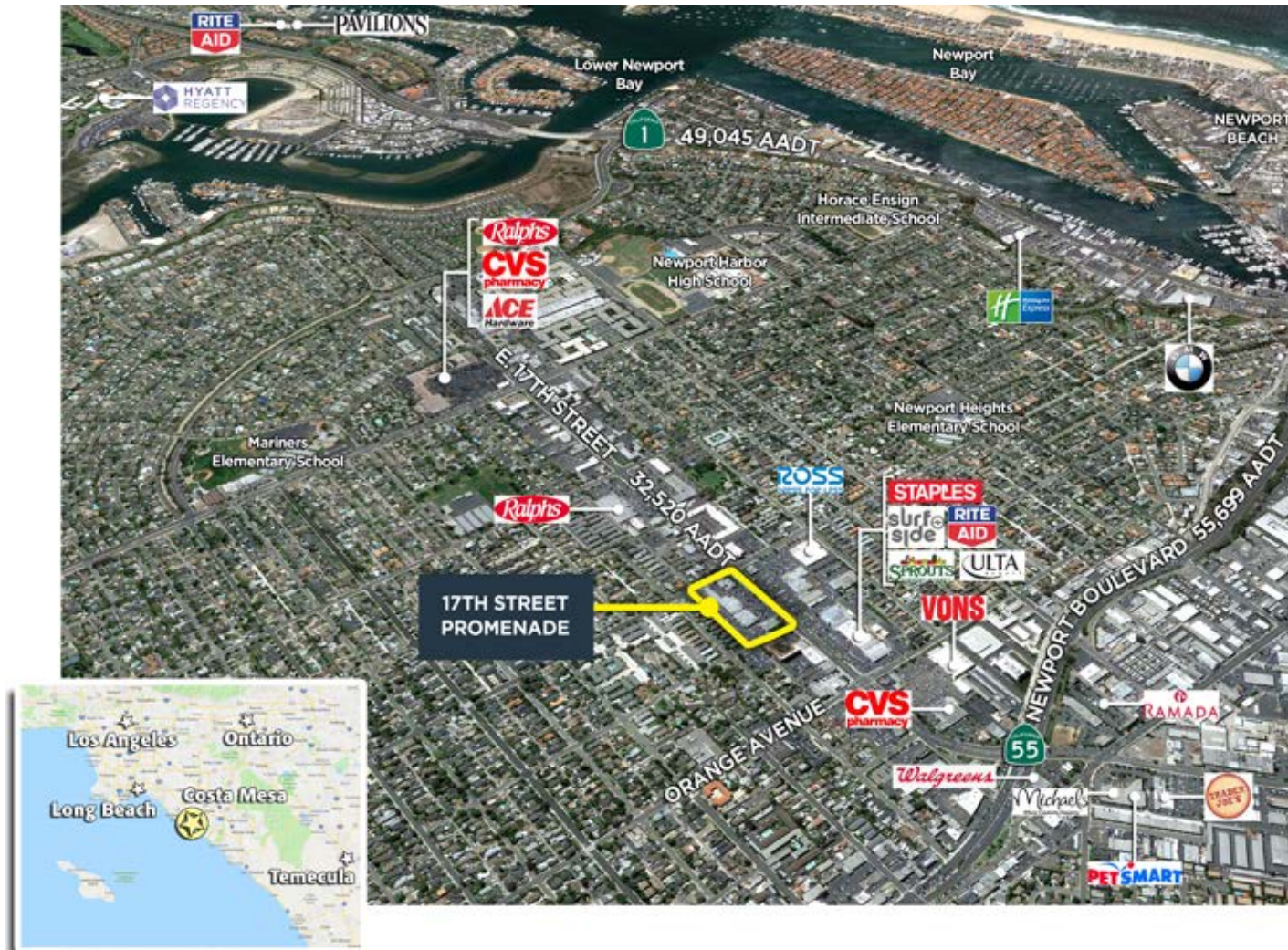




17TH STREET PROMENADE

5250 - 298 E. 17th Street, Costa Mesa, CA



KEY HIGHLIGHTS

- Prime 17th Street location.
- Surrounded by large crowd generators such as Sprouts, Ralphs and Ross.
- Ease of access with 7 total entry/exits points to the center on 3 different streets.
- Heart of Orange County.
- Extremely dense high income demographics.



Contact: **Ralph Ongkeko** | (855) 367-8877 | rongkeko@valuerockrealty.com | valuerockrealty.com

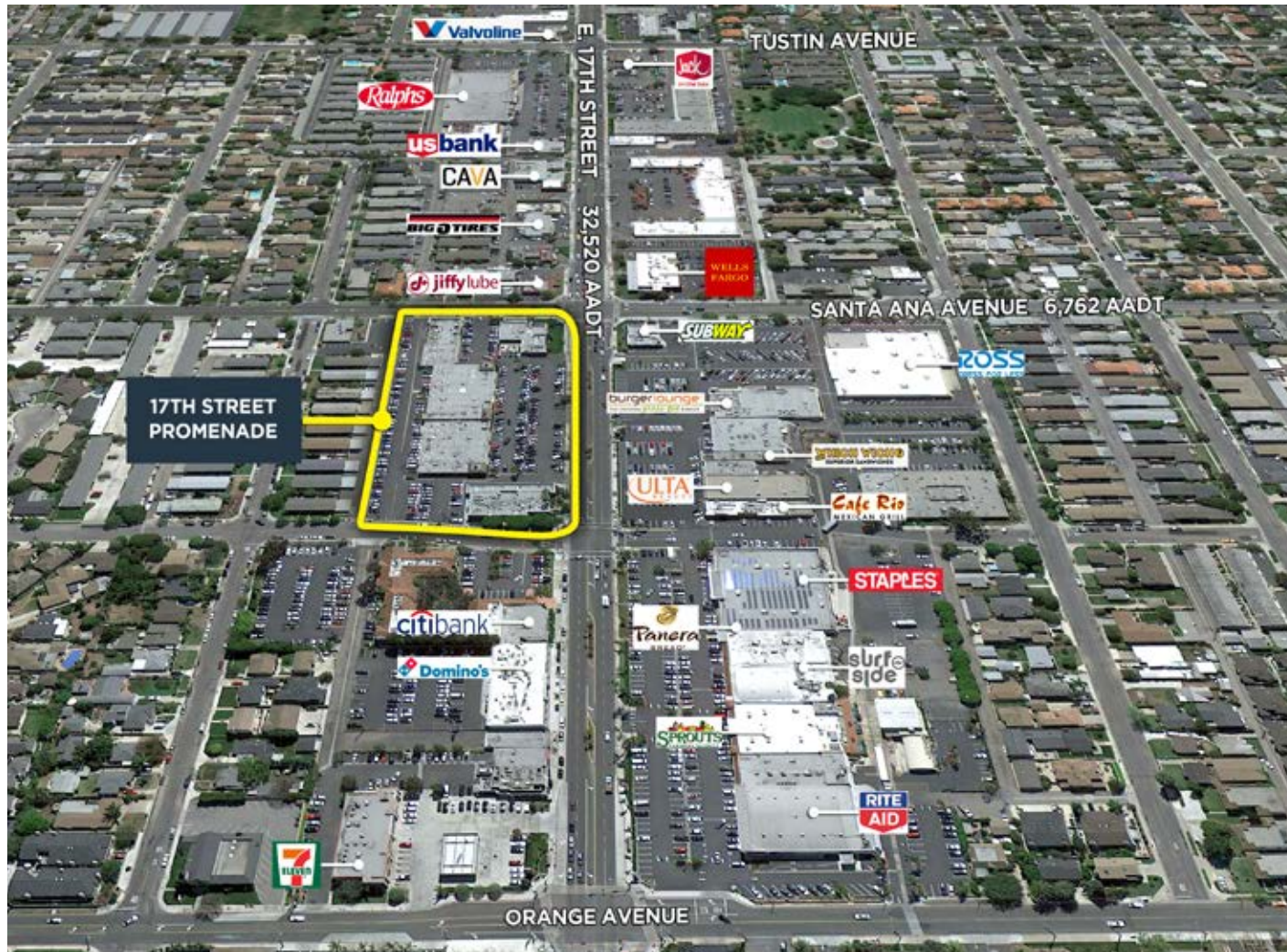
18301 Von Karman Avenue, Suite 850, Irvine, CA 92612

The information contained has been secured from sources we believe to be reliable, but we make no representations or warranties, expressed or implied, as to the accuracy of the information. The receiving party must verify the information and bears all risk for any inaccuracies.



17TH STREET PROMENADE

5250 - 298 E. 17th Street, Costa Mesa, CA



PROPERTY DETAILS

Land Area	3.90 Acres
Location	250-298 E. 17th Street, Costa Mesa, CA 92627

SURROUNDING DEMOGRAPHICS

	1 mile	3 mile	5 mile
Population	27,895	139,998	296,743
Average Income	\$144,002	\$148,048	\$146,954



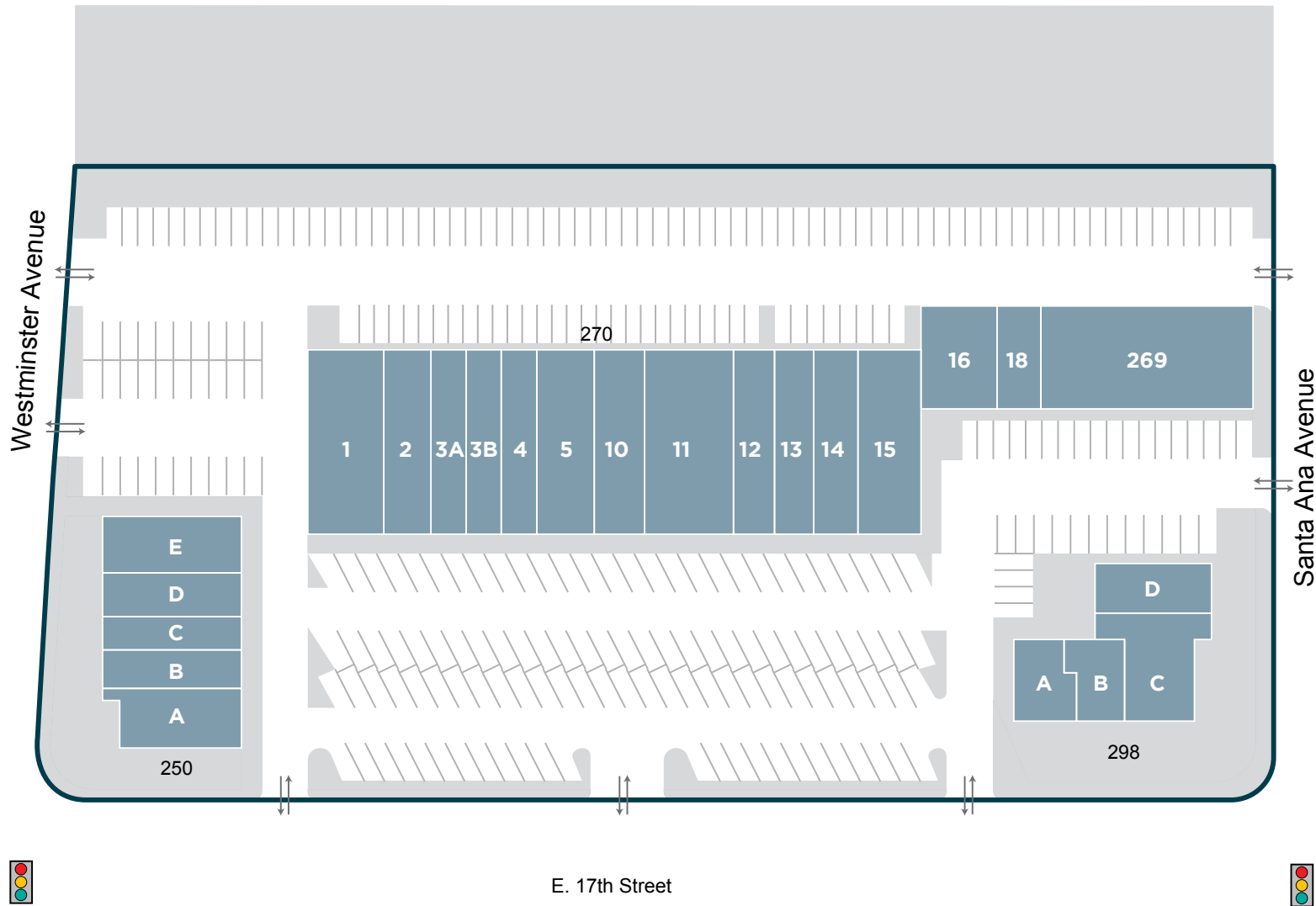
Contact: **Ralph Ongkeko** | (855) 367-8877 | rongkeko@valuerockrealty.com | valuerockrealty.com
18301 Von Karman Avenue, Suite 850, Irvine, CA 92612

The information contained has been secured from sources we believe to be reliable, but we make no representations or warranties, expressed or implied, as to the accuracy of the information. The receiving party must verify the information and bears all risk for any inaccuracies.



17TH STREET PROMENADE

5250 - 298 E. 17th Street, Costa Mesa, CA



Contact: **Ralph Ongkeko** | (855) 367-8877 | rongkeko@valuerockrealty.com | valuerockrealty.com
18301 Von Karman Avenue, Suite 850, Irvine, CA 92612

The information contained has been secured from sources we believe to be reliable, but we make no representations or warranties, expressed or implied, as to the accuracy of the information. The receiving party must verify the information and bears all risk for any inaccuracies.

